



JANUARY, 2021

PRODUCT CATALOG

www.geokall-iot.com





TABLE OF CONTENTS V1.4

Who We Are?	4
Our Team	5
Holistic Approach	6
Portfolio	8
Our Focus	9
RMS	10
MODEMS	
GKTRM240	14
GKTRM250	16
GATEWAYS	
GKTRB140	20
GKTRB141	22
GKTRB142	24
GKTRB145	26
GKTRB245	28
GKTRB255	30
Use Case: Remote Monitoring of Oil & Gas Pipelines	32
Use Case: Smart Grid & Substation Communication	33
ROUTERS	
GKRUT240	36
GKRUT300	38
GKRUT360	40
GKRUT850	42
GKRUT950	44
GKRUT955	46
GKRUTX08	48
GKRUTX09	50
GKRUTX10	52
GKRUTX11	54
GKRUTX12	56
GKRUTX	58
Use Case: Intelligent Traffic System Connectivity	60
Use Case: Fast and Uninterrupted Retail Connectivity	61

SWITCHES

GKTSW100	64
GKTSW110	66
Use Case: Reliable Multiple Camera Connectivity	68
Use Case: PoE Technology Simplifying Office Network Integrations	69

Feature Comparison	70
--------------------	----

ASSECCORIES

Powering Options	72
Antennas Options	73
Mounting Options	74
Bluetooth Sensor	75

Our Worldwide Offices	76
-----------------------	----

WHO WE ARE?

22 YEARS
OF IoT BUSINESS

We are a rapidly growing technology company, manufacturing professional network connectivity equipment for international markets. Through long-term experience and research and development of industrial network devices for IoT and M2M communication, we have developed a wide portfolio of products for the most complex areas, such as Industry 4.0, Smart City, and Green Energy.



OUR MISSION IS

to be a fast and flexible partner and be closer to our clients in every world region. Longstanding experience, reliable supply chain, and highest technology process models enable us to produce millions of IoT devices to our clients.

OUR VISION IS

to become one of the global leaders providing unique IoT solutions that contribute to making people's lives easier. We are open-minded to establish the environment for the creative and ambitious work professionals in Lithuania and the rest of the world to grow and contribute towards our Mission.

OUR VALUES ARE

not only working but also living to help and sharing kindness to people, especially those who need our help the most. We are keeping our values by continuously and courageously creating synergy between Geokall IoT Group and business partners as well as clients.

2
OFFICES
IN 2
COUNTRIES

OUR TEAM

BIGGEST STRENGTH!

Geokall has a proven track record of rapid growth within professional and industrial cellular connectivity market segments. It would not be possible without a strong, ambitious, and continuously growing team.

10+

Employees

45%

team growth in 2020

3+

nationalities

100%

dedication to our partners



OUR PARTNERS HOLISTIC APPROACH



From concept to the finished product - we develop everything in-house to ensure maximum quality and efficiency. It enables us to move much faster because we do not rely on any externalities.

Over the years, we have implemented hundreds of customized projects, from the smallest firmware changes to full-scale hardware alterations. This experience helped our partners capture more opportunities in the fast-paced technology environment - together.

We make all of our products in the state-of-the-art Geokall IoT Group manufacturing facility in Vilnius, Lithuania. Full control over our production allows us to ensure that we deliver only the best and most reliable devices.

MODERN
SMT LINES

100+ ROBOTS FOR
AUTOMATION

ECOFRIENDLY PACKAGING
AND LASER ENGRAVING

FROM CONCEPT TO THE FINISHED
PRODUCT

EXPERIENCE

For more than 22 years we have been providing reliable Industrial IoT & M2M connectivity solutions that are secure and easy to use.

FLEXIBILITY

We have implemented hundreds of customized projects from the smallest firmware change to full-scale hardware alterations.

ALL IN ONE

From the concept to the finished product - we develop everything in-house to ensure maximum quality and efficiency.



PORTFOLIO

WE HELP YOU CONNECT

We designed our product portfolio to help our partners access opportunities within the rapidly growing IoT and Industrial IoT space. It consists of modems, gateways, routers, switches, and IoT platforms. We have grown to be one of the leaders of cellular IoT devices for industrial and professional applications. From automation, smart grid, to public transport connectivity - hundreds of thousands of our networking products are currently at the heart of our partners' solutions.

GROWING PORTFOLIO



22 DEVICES - UNLIMITED USE CASES



INDUSTRIAL & AUTOMATION

Global adoption of automation demands the ability to monitor and manage equipment remotely to increase productivity.



ENERGY & UTILITIES

Reducing power consumption and maintenance costs by building wired and wireless IoT connectivity solutions.



SMART CITY

Connected sensors, infrastructure, vehicles, and devices require secure and reliable IoT connectivity products.



TRANSPORTATION

Networking devices transport operators to optimize their businesses and create new revenue streams.



ENTERPRISE

Enterprise applications require primary and backup connectivity solutions that are secure, reliable, and easy to use.



RETAIL

IoT connectivity solutions offer new ways to interact with clients and collect valuable data to make strategic decisions.

OUR FOCUS

INSPIRE

At Geokall, we have a clearly defined product development philosophy that we use at every stage of product development decision making. We know that security and reliability are the two core factors in industrial networking device selection. However, we thrive to offer complex and capable devices without the sacrifice of ease of use. We wish to make IoT accessible to every enthusiast to inspire creativity and solve real-life problems with technology.

RELIABLE

Reliability is one of the core focus while designing devices at Geokall. Our products are engineered and manufactured with goal to achieve the best reliability possible.

SECURE

Security risk tests are performed constantly on all Geokall devices and all products are being periodically updated to eliminate any breaches in order to assure highest level of security.

EASY TO USE

Geokall devices are highly professional however they are very easy to use. Ability to offer products which do not require any special training is one of our strengths.

RUTOS

OPERATING SYSTEM FOR NETWORKING PRODUCTS

RutOS is our unified router Operating System and the core component of all Geokall products. 10+ years of development made RutOS grow to the highest Industry standards. Security, stability and user experience are the key values that our platform is built around. Intuitive Web interface and constantly growing Wiki/Crowd-Support platforms help our partners to cut costs on engineer training while implementing new devices or migrating from other systems.

Geokall products stand out as easily manageable devices on the market. Multiple remote monitoring and control functions are inseparable part of RutOS. This Open-source OpenWrt based Operating System along with full software documentation enable easy development of custom software solutions or new functionality as well as fast integration with 3rd party platforms.

COMPLETE SOLUTION

RMS

The Remote Management System (RMS) by Geokall allows you to be in control of your complete IoT solution from anywhere in the world. RMS offers remote access to all of your devices from a single user-friendly platform. We tailored RMS to meet the requirements of various client profiles and designed three available RMS plans.

REMOTE MANAGEMENT SYSTEM



MANAGEMENT

RMS MANAGEMENT gives you full control over your fleet of Geokall routers and gateways, ensuring their security and availability. RMS offers many features to save your time and expenses while managing everything remotely - even without a public IP!

USER FRIENDLY INTERFACE

MULTI-CONFIGURATION

LOCATION HISTORY & POSITIONING

CUSTOMIZABLE ALERTS AND NOTIFICATIONS

HISTORICAL DATA AND REPORTS

HOTSPOT MANAGEMENT SERVICE

CONNECT

RMS CONNECT is a unified access system, which allows you to reach and control smart devices remotely via RMS. If your PLC, Industrial PC, CCTV camera, Point of Sale system or other intelligent device is reachable by one of RMS compatible routers or gateways, you can access it with RMS CONNECT without a public IP or additional VPN services!

// HTTP/HTTPS protocol compatibility allows for easy access of Web User Interface of other devices

// SSH enables you to reach Command Line Interface of end devices via SSH tunnels

// Remote Desktop functionality enables you to gain full control of any equipment running Windows, Linux or Android that support RDP/VNC protocols

API

What could be more efficient than having a single software system for your whole connected solution infrastructure? With our RMS API you can get just that! RMS API allows your IoT Platform to directly interact with RMS and get the exact data and functionality you need. Just like with other RMS services we want to give you full control of your solution and RMS API brings that to another level!

MODEMS

Industrial cellular modems is the most cost-efficient and scalable method to provide reliable connectivity in industrial networking applications. Large amount of legacy and Industrial IoT infrastructure worldwide requires different methods of connectivity. Robust Industrial Cellular Modems from Geokall provide numerous cellular connectivity options, ranging from 2G (EGPRS) to 4G LTE Cat 1, LTE Cat-M1 and NB-IoT.



GKTRM240

INDUSTRIAL CELLULAR MODEM

GKTRM240 is an Industrial grade USB LTE Cat 1 Modem with rugged housing and external antenna for better signal coverage. This product is perfect for upgrading existing industrial equipment with cost-efficient LTE connectivity.

CONNECTIVITY

4G/LTE (Cat 1), 3G, 2G

DURABLE

Rugged aluminium housing

USB

Interface for internet access

EFFICIENT

Low power consumption

COMPACT

Small size, easy installation

EASY TO USE

Controlled using Network manager

HARDWARE

E

Mobile	4G/LTE (Cat 1), 3G, 2G
Powering option	microUSB, 5 VDC
SIM	1 x Internal SIM holder (2FF)
Antenna connectors	1 x SMA for mobile
USB	1 x Micro USB slave
Status LEDs	1 x LTE, 1 x Network, 1 x Power
Ingress protection rating	IP30
Operating humidity	10 % to 90 % non-condensing
Operating temperature	-40 °C to 75 °C
Housing	Aluminium housing with DIN rail mounting option
Dimensions (W x H x D)	75 x 25 x 65 mm
Weight	125 g

SOFTWARE

Network manager	Windows 7/8/8.1/10 Linux distributions
USB serial driver	Windows 7/8/8.1/10 Windows CE 5.0/6.0 Linux 2.6~5.4 Android 4.x/5.x/6.x/7.x/8.x/9.x
RIL driver	Android 4.x/5.x/6.x/7.x/8.x/9.x
NDIS driver	Windows 7/8/8.1/10
Gobinet driver	Linux 2.6~5.4
QMI_WWAN driver	Linux 3.4~5.4
Control via AT commands	3GPP TS27.007 and enhanced AT commands



GKTRM250

INDUSTRIAL CELLULAR MODEM

GKTRM250 is an Industrial grade USB LTE Cat-M1/NB-IoT/EGPRS Modem with rugged housing and external antenna for better signal coverage. This product is perfect for providing cost-efficient Internet connectivity in remote monitoring applications.

CONNECTIVITY

4G/LTE (Cat M1), NB-IoT, 2G

DURABLE

Rugged aluminum housing

USB

Interface for internet access

EFFICIENT

Low power consumption

COMPACT

Small size, easy installation

EASY TO USE

Controlled using Network manager

HARDWARE

E

Mobile	4G/LTE (Cat M1), NB-IoT, 2G
Powering option	microUSB, 5 VDC
SIM	1 x Internal SIM holder (2FF)
Antenna connectors	1 x SMA for mobile
USB	1 x Micro USB slave
Status LEDs	1 x Network, 1 x Power
Ingress protection rating	IP30
Operating humidity	10 % to 90 % non-condensing
Operating temperature	-40 °C to 75 °C
Housing	Aluminium housing with DIN rail mounting option
Dimensions (W x H x D)	75 x 25 x 65 mm
Weight	125 g

SOFTWARE

Network manager	Windows 7/8/8.1/10 Linux distributions
USB serial driver	Windows 7/8/8.1/10 Windows CE 5.0/6.0 Linux 2.6~5.4 Android 4.x/5.x/6.x/7.x/8.x/9.x
RIL driver	Android 4.x/5.x/6.x/7.x/8.x/9.x
NDIS driver	Windows 7/8/8.1/10
Gobinet driver	Linux 2.6~5.4
QMI_WWAN driver	Linux 3.4~5.4
Control via AT commands	3GPP TS27.007 and enhanced AT commands

GATEWAYS

Geokall TRB series is a set of programmable M2M gateways designed to connect one device to the Internet. Linux-based highly functional TRB devices come with industrial networking capabilities and variety of interfaces such as Ethernet, RS232, RS485 or Inputs/Outputs. All our gateways are 4G LTE capable and can be connected to the RMS (Remote management system) for intuitive and convenient remote monitoring, configuration and control.



GKTRB140

INDUSTRIAL RUGGED LTE GATEWAY

Ultra-small, lightweight and energy efficient IoT device equipped with mission-critical LTE connectivity, Gigabit Ethernet interface and Linux environment offering a high degree of customization. GKTRB140 is perfect for projects and applications where a single device must be upgraded with reliable and secure Internet connectivity.

CONNECTIVITY

4G/LTE (Cat 4), 3G, 2G

9-30V

Wide range of supported power supply voltages

DURABLE

Rugged aluminum housing

COMPACT

Small size, easy installation

RUTOS

Easy to use, secure and feature rich OpenWRT based operating system

RMS

Compatible with Geokall Remote Management System

HARDWARE

E

Mobile	4G/LTE (Cat 4), 3G, 2G
CPU	Qualcomm, ARM Cortex A7, 1.2 GHz
Memory	512 MBytes Flash (70 MBytes for userspace), 128 MBytes RAM (50 MBytes for userspace)
Powering option	4pin power socket, 9-30 VDC
SIM	1 x Internal SIM holder (2FF)
Antenna connectors	1 x SMA for mobile
Ethernet	1 x 10/100/1000 Ethernet port
Inputs/Outputs	On 4pin socket: 2 x Digital input/Digital open collector output (configurable)
Other	1 x Micro USB slave
Status LEDs	3 x Connection type, 5 x Signal strength, 2 x Ethernet, 1 x Power
Operating temperature	-40 °C to 75 °C
Housing	Aluminium housing with DIN rail mounting option
Dimensions (W x H x D)	75 x 25 x 65 mm
Weight	134 g

SOFTWARE

Operating system	RutOS
Mobile features	Auto APN, Band lock, SIM switch, Operator black/white list, Data/SMS limits
Network protocols	TCP, UDP, IPv4, IPv6, ICMP, NTP, DNS, HTTP, HTTPS, FTP, SMTP, SSLv3, TLS 1.3, ARP, PPP, DHCP, Telnet
Firewall	Port forward, Traffic rules, Custom rules, Pre-configured firewall rules, DMZ, NAT, NAT-T, NAT helpers, Unlimited firewall configuration via CLI
Security	DDOS prevention (SYN flood protection, SSH attack prevention, HTTP/HTTPS attack prevention), Port scan prevention (SYN-FIN, SYN-RST, X-mas, NULL flags, FIN scan attacks)
VPN and tunneling	OpenVPN, IPsec, GRE, PPTP, L2TP
Monitoring and management	WEB UI, CLI, SSH, SMS, TR-069, SNMP, JSON-RPC, MQTT, RMS
Connection monitoring	Ping Reboot, Wget reboot, Periodic Reboot, LCP and ICMP for link inspection
Cloud solutions	RMS, Azure IoT Hub, Cloud of Things, Cumulocity, ThingWorx
SMS features	SMS status, SMS configuration, Send/Read SMS via HTTP POST/GET, EMAIL to SMS, SMS to Email, SMS to HTTP, SMS to SMS, scheduled SMS, SMS autoreply
Services	DDNS, VRRP, Wake On Lan (WOL), WEB filter, UPNP, Traffic Logging



GKTRB141

▶ INDUSTRIAL RUGGED GPIO LTE GATEWAY

▶ Industrial and small LTE Cat 1 Gateway equipped with multiple Inputs/Outputs and MicroUSB port. Compact design makes this Gateway perfect for applications where devices must be remotely managed using I/O's.

CONNECTIVITY

4G/LTE (Cat 1), 3G, 2G

9-30V

Wide range of supported power supply voltages

DURABLE

Rugged aluminum housing

COMPACT

Small size, easy installation

I/O

Wide range of multiple Inputs/Outputs for remote monitoring and control

RMS

Compatible with Geokall Remote Management System

HARDWARE

Mobile	4G/LTE (Cat 1), 3G, 2G
CPU	Qualcomm, ARM Cortex A7, 1.2 GHz
Memory	512 MBytes Flash (70 MBytes for userspace), 128 MBytes RAM (50 MBytes for userspace)
Powering option	4pin power socket, 9-30 VDC
SIM	1 x Internal SIM holder (2FF)
Antenna connectors	1 x SMA for mobile
Inputs/Outputs	On 4pin socket: 2 x Digital input/Digital open collector output (configurable) On 16pin socket: 1 x Isolated input, 1 x 1-Wire interface, 1 x Analog input (with 4-20mA capability), 1 x Latching relay output, 1 x Non-latching relay output, 2 x Dry/Wet input (configurable)
Other	1 x Micro USB slave
Status LEDs	3 x Connection type, 5 x Signal strength, 1 x Power
Operating temperature	-40 °C to 75 °C
Housing	Aluminium housing with DIN rail mounting option
Dimensions (W x H x D)	75 x 25 x 65 mm
Weight	136 g

SOFTWARE

Operating system	RutOS
Network protocols	TCP, UDP, IPv4, IPv6, ICMP, NTP, DNS, HTTP, HTTPS, FTP, SMTP, SSLv3, TLS 1.3, ARP, PPP, DHCP, Telnet
VPN and tunneling	OpenVPN, IPsec, GRE, PPTP, L2TP
Monitoring and Management	WEB UI, CLI, SSH, SMS, TR-069, SNMP, JSON-RPC, MQTT, RMS
Connection monitoring	Ping Reboot, Wget reboot, Periodic Reboot, LCP and ICMP for link inspection
Cloud solutions	RMS, Azure IoT Hub, Cloud of Things, Cumulocity, ThingWorx
Services	DDNS, VRRP, WEB filter, UPNP, Traffic Logging



▶ GKTRB142

▶ INDUSTRIAL RUGGED LTE RS232 GATEWAY

▶ Ultra-small, lightweight and energy efficient IoT device equipped with mission-critical LTE connectivity. GKTRB142 comes with a widely used RS232 industrial interface for remote device management.

CONNECTIVITY

4G/LTE (Cat 1), 3G, 2G

DURABLE

Rugged aluminum housing

SERIAL

Equipped with RS232 for serial communication

9-30V

Wide range of supported power supply voltages

COMPACT

Small size, easy installation

RMS

Compatible with Geokall Remote Management System

HARDWARE

Mobile	4G/LTE (Cat 1), 3G, 2G
CPU	Qualcomm, ARM Cortex A7, 1.2 GHz
Memory	512 MBytes Flash (70 MBytes for userspace), 128 MBytes RAM (50 MBytes for userspace)
Powering option	4pin power socket, 9-30 VDC
SIM	1 x Internal SIM holder (2FF)
Antenna connectors	1 x SMA for mobile
Inputs/Outputs	On 4pin socket: 2 x Digital input/Digital open collector output (configurable)
Serial	1 x RS232
Other	1 x Micro USB slave
Status LEDs	3 x Connection type, 5 x Signal strength, 1 x Power
Operating temperature	-40° C to 75° C
Housing	Aluminium housing with DIN rail mounting option
Dimensions (W x H x D)	75 x 25 x 65 mm
Weight	135 g

SOFTWARE

Operating system	RutOS
Network protocols	TCP, UDP, IPv4, IPv6, ICMP, NTP, DNS, HTTP, HTTPS, FTP, SMTP, SSLv3, TLS 1.3, ARP, PPP, DHCP, Telnet
Monitoring and Management	WEB UI, CLI, SSH, SMS, TR-069, SNMP, JSON-RPC, MQTT, RMS
Connection monitoring	Ping Reboot, Wget reboot, Periodic Reboot, LCP and ICMP for link inspection
Cloud solutions	RMS, Azure IoT Hub, Cloud of Things, Cumulocity, ThingWorx
Modbus	TCPslave, TCPmaster, RTU master, RTU gateway, Modbus over MQTT
Serial	Console, Over IP, Modem, NTRIP, Modbus



▶ GKTRB145

▶ INDUSTRIAL RUGGED LTE RS485 GATEWAY

▶ Ultra-small, lightweight and energy efficient IoT device equipped with mission-critical LTE connectivity. GKTRB145 comes with a widely used RS485 Industrial interface for remote device management.

CONNECTIVITY

4G/LTE (Cat 1), 3G, 2G

9-30V

Wide range of supported power supply voltages

DURABLE

Rugged aluminum housing

COMPACT

Small size, easy installation

SERIAL

Equipped with RS485 for serial communication

RMS

Compatible with Geokall Remote Management System

HARDWARE

Mobile	4G/LTE (Cat 1), 3G, 2G
CPU	Qualcomm, ARM Cortex A7, 1.2 GHz
Memory	512 MBytes Flash (70 MBytes for userspace), 128 MBytes RAM (50 MBytes for userspace)
Powering option	4pin power socket, 9-30 VDC
SIM	1 x Internal SIM holder (2FF)
Antenna connectors	1 x SMA for mobile
Inputs/Outputs	On 4pin socket: 2 x Digital input/Digital open collector output (configurable)
Serial	1 x RS485
Other	1 x Micro USB slave
Status LEDs	3 x Connection type, 5 x Signal strength, 1 x Power
Operating temperature	-40° C to 75° C
Housing	Aluminium housing with DIN rail mounting option
Dimensions (W x H x D)	75 x 25 x 65 mm
Weight	130 g

SOFTWARE

Operating system	RutOS
Network protocols	TCP, UDP, IPv4, IPv6, ICMP, NTP, DNS, HTTP, HTTPS, FTP, SMTP, SSLv3, TLS 1.3, ARP, PPP, DHCP, Telnet
Monitoring and Management	WEB UI, CLI, SSH, SMS, TR-069, SNMP, JSON-RPC, MQTT, RMS
Connection monitoring	Ping Reboot, Wget reboot, Periodic Reboot, LCP and ICMP for link inspection
Cloud solutions	RMS, Azure IoT Hub, Cloud of Things, Cumulocity, ThingWorx
Modbus	TCPslave, TCPmaster, RTU master, RTU gateway, Modbus over MQTT
Serial	Console, Over IP, Modem, NTRIP, Modbus



GKTRB245

INDUSTRIAL M2M LTE GATEWAY

Industrial All-In-One M2M LTE Cat 4 Gateway equipped with multiple Inputs/Outputs, RS232, RS485 and Ethernet interfaces. All these features allow this device to be used universally in M2M applications.

CONNECTIVITY

4G/LTE (Cat 4), 3G, 2G

DUAL SIM

With auto failover, backup WAN and other switching scenarios

SERIAL

RS232/RS485 serial communication interfaces

9-30V

Wide range of power supply voltages

I/O

Multiple Inputs and Outputs for remote monitoring and control

GNSS

Global Navigation Satellite System for location services with geofencing functionality

HARDWARE

Mobile	4G/LTE (Cat 4), 3G, 2G
CPU	Qualcomm, MIPS 24Kc, 650 MHz
Memory	16 MBytes Flash, 64 MBytes RAM
Powering option	16pin terminal, 9-30 VDC
SIM	2 x Internal SIM holders (2FF)
Antenna connectors	1 x SMA for mobile, 1 x SMA for GPS
Ethernet	1 x 10/100 Ethernet port
GNSS	GPS, GLONASS, BeiDou, Galileo, QZSS
Inputs/Outputs	On 16pin socket: 3 x Digital input/Digital open collector output (configurable), 1 x Analog input
Serial	1 x RS232, 1 x RS485
Status LEDs	3 x Connection type, 3 x Signal strength, 2 x Ethernet, 1 x Power
Operating temperature	-40 °C to 75 °C
Housing	Aluminium housing with DIN rail mounting option
Dimensions (W x H x D)	83 x 25 x 74 mm
Weight	165 g

SOFTWARE

Operating system	RutOS (OpenWrt based Linux OS)
Mobile features	Multiple PDN, Auto APN, Band lock, SIM switch, Operator black/white list, Data/SMS limits
Network protocols	TCP, UDP, IPv4, IPv6, ICMP, NTP, DNS, HTTP, HTTPS, FTP, SMTP, SSLv3, TLS 1.3, ARP, PPP, DHCP, Telnet
Monitoring and Management	WEB UI, CLI, SSH, SMS, TR-069, SNMP, JSON-RPC, MQTT, RMS
Connection monitoring	Ping Reboot, Wget reboot, Periodic Reboot, LCP and ICMP for link inspection
Cloud solutions	RMS, Azure IoT Hub, Cloud of Things, Cumulocity, ThingWorx
NTP	NTP Server, NTP Client, Sync with: External NTP server, GNSS, Mobile operator
GNSS	NMEA forwarding, AVL, Geofencing
Modbus	TCP slave, TCP master, RTU master, RTU gateway, Modbus over MQTT
Serial	Console, Over IP, Modem, NTRIP, Modbus
Administration	Multi user, Configuration profiles, Diagnostics, logs, Configuration backup



GKTRB255

INDUSTRIAL M2M GATEWAY

Industrial All-In-One M2M LTE-Cat-M1/NB-IoT/EGPRS Gateway equipped with multiple Inputs/Outputs, RS232, RS485 and Ethernet interfaces. All these features allow this device to be used universally in M2M applications.

CONNECTIVITY

4G/LTE (Cat M1), NB-IoT, 2G

DUAL SIM

With auto failover, backup WAN and other switching scenarios

SERIAL

RS232/RS485 serial communication interfaces

9-30V

Wide range of supported power supply voltages

I/O

Multiple Inputs and Outputs for remote monitoring and control

GNSS

Global Navigation Satellite System for location services with geofencing functionality

HARDWARE

Mobile	4G/LTE (Cat M1), NB-IoT, 2G
CPU	Qualcomm, MIPS 24Kc, 650 MHz
Memory	16 MBytes Flash, 64 MBytes RAM
Powering option	16pin terminal, 9-30 VDC
SIM	2 x Internal SIM holders (2FF)
Antenna connectors	1 x SMA for mobile, 1 x SMA for GPS
Ethernet	1 x 10/100 Ethernet port
GNSS	GPS, GLONASS, BeiDou, Galileo, QZSS
Inputs/Outputs	On 16pin socket: 3 x Digital input/Digital open collector output (configurable), 1 x Analog input
Serial	1 x RS232, 1 x RS485
Status LEDs	3 x Connection type, 3 x Signal strength, 2 x Ethernet, 1 x Power
Operating temperature	-40 °C to 75 °C
Housing	Aluminium housing with DIN rail mounting option
Dimensions (W x H x D)	83 x 25 x 74 mm
Weight	165 g

SOFTWARE

Operating system	RutOS (OpenWrt based Linux OS)
Mobile features	Multiple PDN, Auto APN, Band lock, SIM switch, Operator black/white list, Data/SMS limits
Network protocols	TCP, UDP, IPv4, IPv6, ICMP, NTP, DNS, HTTP, HTTPS, FTP, SMTP, SSLv3, TLS 1.3, ARP, PPP, DHCP, Telnet
Monitoring and management	WEB UI, CLI, SSH, SMS, TR-069, SNMP, JSON-RPC, MQTT, RMS
Connection monitoring	Ping Reboot, Wget reboot, Periodic Reboot, LCP and ICMP for link inspection
Cloud solutions	RMS, Azure IoT Hub, Cloud of Things, Cumulocity, ThingWorx
NTP	NTP Server, NTP Client, Sync with: External NTP server, GNSS, Mobile operator
GNSS	NMEA forwarding, AVL, Geofencing
Modbus	TCP slave, TCP master, RTU master, RTU gateway, Modbus over MQTT
Serial	Console, Over IP, Modem, NTRIP, Modbus
Administration	Multi user, Configuration profiles, Diagnostics, logs, Configuration backup

REMOTE MONITORING OF OIL & GAS PIPELINES

ENERGY & UTILITIES

Our lives depend on energy. While many countries are working towards a more sustainable future with development focused on renewable energy, oil and gas remain the most popular energy sources. It accounts for more than 60% of the global energy consumption, as per BP estimates.

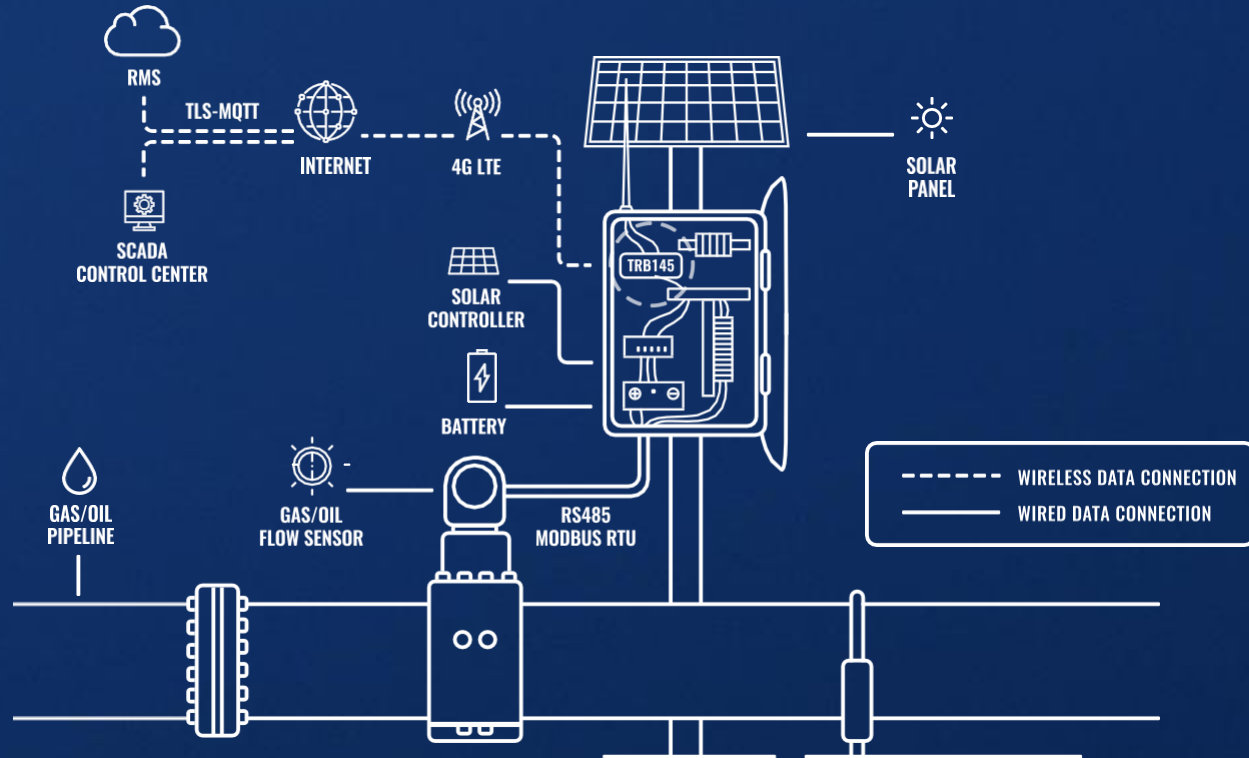
SOLUTION

While satellite communications are still expensive, global expansion of 4G LTE coverage enables Oil and Gas companies to implement a wide pipeline flow monitoring network by using dedicated flow meters, which output data using industrial protocols. In many cases - serial communication travels via RS-485 and uses Modbus industrial protocol. The data generated by the flow meter is forwarded to control centers and SCADA systems for aggregation and central interpretation. GKTRB145 Serial IoT Gateway by Geokall is perfect for such applications. RS-485 interface, Modbus RTU Master functionality, and 4G LTE Cat1 enables to periodically

read flow meter information and send gathered data to remote HTTP/HTTPS servers or various IoT platforms using MQTT. The wide power supply range and low energy consumption allow GKTRB145 to power up by combining solar power and batteries.

BENEFITS

/Low-cost and quick to deploy - multiple TRBs can be simultaneously configured immediately using Geokall Remote Management System (RMS).
 /High availability and low data cost - 4G LTE is highly available globally and cost-efficient due to low amounts of data required for this application.
 /Data security - GKTRB145 supports advanced data protection with embedded Firewall and encryption with multiple VPN services, such as OpenVPN, IPsec, PPTP, L2TP, and others.
 /Immediate notifications - if preset flow values fall out of defined criteria, system operators can setup GKTRB145 to receive immediate alarms.



SMART GRID & SUBSTATION COMMUNICATION

ENERGY & UTILITIES

The energy market is one of the most crucial industry sectors enabling our everyday lives. It requires constant development and innovation. The Industrial Internet of Things is a movement towards more connectivity and control in every aspect of industry digitization, and the energy sector is no exception.

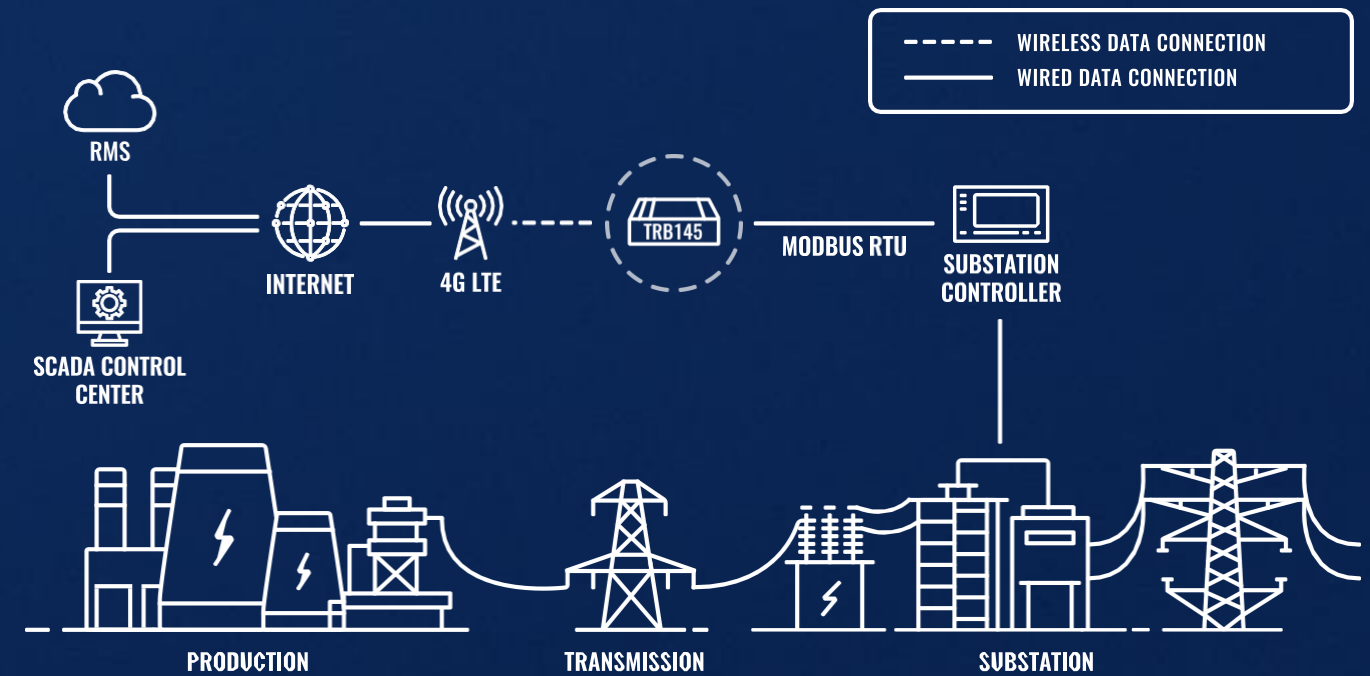
SOLUTION

Integrators and energy operators worldwide have recognized that cellular solutions, such as 4G LTE enabled gateways and routers, offer the most reliable connectivity and best availability for their complex substation systems. In many cases, substation controllers aren't new, meaning that they use serial interfaces for communication, such as RS232. GKTRB142 is a 4G LTE Cat1 enabled cellular gateway by Geokall able to connect legacy equipment via serial RS232 and manage connectivity with numerous industrial and networking protocols, like Modbus RTU & MQTT. It also has advanced firmware security functions, including a firewall and multiple supported VPN services. Moreover, GKTRB142 can diagnose any connectivity and functionality issues and reboot separate modules of the gateway to restore service automatically

without any interference from the operators. Finally, all GKTRB142 devices can be easily monitored and controlled from thousands of miles away with Geokall Remote Management System. It allows generating customizable alerts, reports and enables direct access to the substation controllers connected with GKTRB142, even without a Public IP.

BENEFITS

/GKTRB142 is easy to set up, easy to install, and even easier to maintain with full support for Geokall Remote Management System. It is also simple to scale as multiple devices configure all at once using RMS.
 /This gateway is very reasonably priced and features robust 4G LTE Cat1 - designed for serial interface communication where low data speeds are needed.
 /Advanced firmware functionality includes support for industrial, networking, and remote management protocols, such as Modbus RTU, MQTT, DHCP, SNMP, and features firewall and multiple supported VPN services.



ROUTERS

Our routers are equipped with a variety of wireless and wired connectivity options and technologies which makes them an essential tool to connect people, machines and infrastructure across most market sectors. The Geokall RUT series is engineered to be deployed easily in challenging connectivity scenarios and our RutOS based on Linux OpenWRT has become one of the most functional router operating systems in the market.



GKRUT240

INDUSTRIAL CELLULAR ROUTER

Compact, robust and powerful device tailored for Industrial M2M/IoT applications. GKRUT240 is equipped with 2 x Ethernet and Wireless interfaces with Hotspot functionality. Device provides secure and stable Internet connectivity for Industrial applications using RutOS software and security features with RMS support.

CONNECTIVITY

4G/LTE (Cat 4), 3G, 2G

WAN FAILOVER

Automatic switch to available backup connection

WIFI

Wireless Access Point with Hotspot functionality

COMPACT

Small size – easy integration

I/O

Digital Input/Output for remote monitoring and control

RMS

Compatible with Geokall Remote Management System

HARDWARE

Mobile	4G/LTE (Cat 4), 3G, 2G
CPU	Atheros, MIPS 24Kc, 400 MHz
Memory	16 MBytes Flash, 64 MBytes RAM
Powering option	4pin power socket, 9-30 VDC
SIM	1 x External SIM holder (2FF)
Antenna connectors	2 x SMA for mobile, 1 x RP-SMA for WiFi
Ethernet	2 x 10/100 Ethernet ports: 1 x WAN (configurable as LAN), 1 x LAN
WiFi	IEEE 802.11b/g/n, Access point (AP), Station (STA)
Inputs/Outputs	On 4pin socket: 1 x Digital input, 1 x Digital open collector output
Status LEDs	3 x Connection type, 5 x Signal strength, 2 x Ethernet, 1 x Power
Operating temperature	-40 °C to 75 °C
Housing	Aluminium housing with DIN rail mounting option, plastic panels
Dimensions (W x H x D)	83 x 25 x 74 mm
Weight	135 g

SOFTWARE

Operating system	RutOS (OpenWrt based Linux OS)
Mobile features	Auto APN, Band lock
Network protocols	TCP, UDP, IPv4, IPv6, ICMP, NTP, DNS, HTTP, HTTPS, FTP, SMTP, SSLv3, TLS 1.3, ARP, PPP, PPPoE, DHCP, Telnet
Network	Failover (Network backup), VLAN, QoS, Load Balancing
Security	DDOS prevention (SYN flood protection, SSH attack prevention, HTTP/HTTPS attack prevention), Port scan prevention (SYN-FIN, SYN-RST, X-mas, NULL flags, FIN scan attacksw)
VPN and tunneling	OpenVPN, IPsec, GRE, PPTP, L2TP, Stunnel, DMVPN, SSTP
Monitoring and management	WEB UI, CLI, SSH, SMS, TR-069, SNMP, JSON-RPC, MQTT, RMS
Connection monitoring	Ping Reboot, Wget reboot, Periodic Reboot, LCP and ICMP for link inspection
Cloud solutions	RMS, Azure IoT Hub, Cloud of Things, Cumulocity, ThingWorx
SMS features	SMS status, SMS configuration, Send/Read SMS via HTTP POST/GET, EMAIL to SMS, SMS to Email, SMS to HTTP, SMS to SMS, scheduled SMS, SMS autoreply
Services	DDNS, VRRP, Wake On Lan (WOL), WEB filter, UPNP, Traffic Logging



GKRUT300

INDUSTRIAL ETHERNET ROUTER

Rugged industrial fast Ethernet router that comes with the benefits of RutOS and the possibility to connect to the RMS. Five fast Ethernet ports, two configurable digital Inputs/Outputs, and a USB 2.0 allow to easily connect industrial machinery, office or retail equipment, and other devices to the internet, while advanced pre-configured Firewall and multiple VPNs ensures security.

INTERFACES

5 x Fast Ethernet ports (10/100 Mbps). 2 x Configurable digital Inputs/Outputs and USB 2.0

VLAN

Supports up to 4096 VLAN IDs for VLAN tagging and port based VLANs

VPN

Numerous VPN services including OpenVPN, IPsec, PPTP, L2TP & DMVPN, L2TP, DMVPN, Stunnel and others

FIREWALL

Unlimited firewall configuration via CLI; DMZ; NAT; NAT-T

DURABILITY

Aluminum housing, which is capable to withstand harsh environments

RMS

Compatible with Geokall Remote Management System

HARDWARE

CPU	QCA9531, MIPS 24kc, 650 MHz
Memory	64 MB, DDR2
Storage	16 MB, SPI Flash
Powering option	4 pin power socket, 7-30 VDC
Ethernet	5 x 10/100 Ethernet ports: 1 x WAN, 4 x LAN
Inputs/Outputs	On 4 pin socket: 2 x Configurable digital Inputs/Outputs open collector output
Other	1 x USB Host
Status LEDs	5 x Ethernet, 1 x Power
Operating temperature	-40 °C to 75 °C
Housing	Aluminium housing with DIN rail mounting option and grounding capability
Dimensions (W x H x D)	100 x 30 x 85 mm
Weight	229 g

SOFTWARE

Operating system	RutOS (OpenWrt based Linux OS)
Network protocols	TCP, UDP, IPv4, IPv6, ICMP, NTP, DNS, HTTP, HTTPS, FTP, SMTP, SSLv3, TLS 1.3, ARP, PPP, PPPoE, DHCP, Telnet
Routing	Static routes, Routing rules, (Planned - Dynamic routes (BGP, OSPFv2, RIPv1/v2, EIGRP, NHRP)
Firewall	Port forward, Traffic rules, Custom rules, Pre-configured firewall rules, DMZ, NAT, NAT-T, NAT helpers, Unlimited firewall configuration via CLI
Security	DDOS prevention (SYNflood protection, SSH attack prevention, HTTP/HTTPS attack prevention), Port scan prevention (SYN-FIN, SYN-RST, X-mas, NULL flags, FIN scan attacks)
VPN and tunneling	OpenVPN, IPsec, GRE, PPTP, L2TP, WireGuard, ZeroTier, (Planned - Stunnel, SSTP, DMVPN)
Monitoring and management	WEB UI, CLI, SSH, SMS, TR-069, SNMP, JSON-RPC, MQTT, RMS
Cloud solutions	RMS, FOTA
Services	DDNS, Wake On Lan (WOL), WEB filter, UPNP, Network shares (Samba), Traffic Logging
Administration	Multi user, Configuration profiles, Diagnostics, logs, Configuration backup



GKRUT360

LTE CAT6 INDUSTRIAL CELLULAR ROUTER

A successor of our best-selling model GKRUT240, GKRUT360 keeps its compact shape in a rugged aluminium housing but offers more processing power and better cellular speeds up to 300Mbps with Carrier Aggregation. Unique programming, remote monitoring, and security features make GKRUT360 perfect for IoT and M2M applications, where secure and reliable connectivity is a must and the mobile data speeds are limited.

4G LTE CAT 6

Cellular speeds up to 300Mbps with Carrier Aggregation

WIFI

802.11 b/g/n WiFi

COMPACTNESS

Small size - easy integration anywhere

DURABILITY

Rugged aluminium housing

SECURITY

Firewall and numerous VPN services, including OpenVPN, IPsec, PPTP, L2TP & SSTP

RMS

Compatible with Geokall Remote Management System

HARDWARE

Mobile	4G/LTE (Cat 6), 3G
CPU	Qualcomm, MIPS 24Kc, 650 MHz
Memory	16 MBytes Flash, 128 MBytes RAM
Powering option	4pin power socket, 9-30 VDC
SIM	1 x External SIM holder (2FF)
Antenna connectors	2 x SMA for mobile, 2 x RP-SMA for WiFi
Ethernet	2 x 10/100 Ethernet ports: 1 x WAN (configurable as LAN), 1 x LAN
WiFi	IEEE 802.11b/g/n, Access point (AP), Station (STA)
Inputs/Outputs	On 4pin socket: 2 x Digital input/Digital open collector output (configurable)
Status LEDs	2 x Connection type, 3 x Signal strength, 2 x Ethernet, 1 x Power
Operating temperature	-40 °C to 75 °C
Housing	Aluminium housing with DIN rail mounting option
Dimensions (W x H x D)	100 x 30 x 85 mm
Weight	247 g

SOFTWARE

Operating system	RutOS (OpenWrt based Linux OS)
Mobile features	Auto APN, Band lock
Network protocols	TCP, UDP, IPv4, IPv6, ICMP, NTP, DNS, HTTP, HTTPS, FTP, SMTP, SSLv3, TLS 1.3, ARP, PPP, PPPoE, DHCP, Telnet
Network	Failover (Network backup), VLAN, QoS, Load Balancing
Security	DDOS prevention (SYN flood protection, SSH attack prevention, HTTP/HTTPS attack prevention), Port scan prevention (SYN-FIN, SYN-RST, X-mas, NULL flags, FIN scan attacks)
VPN and tunneling	OpenVPN, IPsec, GRE, PPTP, L2TP, Stunnel, DMVPN, SSTP
Monitoring and management	WEB UI, CLI, SSH, SMS, SNMP, JSON-RPC, MQTT, RMS
Connection monitoring	Ping Reboot, Wget reboot, Periodic Reboot, LCP and ICMP for link inspection
Cloud solutions	RMS, Azure IoT Hub, Cloud of Things, Cumulocity, ThingWorx
SMS features	SMS status, SMS configuration, Send/Read SMS via HTTP POST/GET, EMAIL to SMS, SMS to Email, SMS to HTTP, SMS to SMS, scheduled SMS, SMS autoreply
Services	DDNS, VRRP, Wake On Lan (WOL), WEB filter, UPNP, Traffic Logging



GKRUT850

AUTOMOTIVE CELLULAR ROUTER

E-mark certified, ultra-slim router equipped with Ignition detection (sleep mode), Overvoltage Protection and Automotive FAKRA connectors. GKRUT850 comes with RutOS software and security features and custom GNSS tracking protocol that is compatible with main Global AVL tracking platforms.

CONNECTIVITY

4G/LTE (Cat 4), 3G, 2G

GNSS

Global Navigation Satellite System for location services with geofencing functionality

WIFI

Wireless Access Point with Hotspot functionality

SLEEP MODE

With ignition detection and overvoltage protection

DURABLE

Vibration resistant FAKRA connectors

RMS

Compatible with Geokall Remote Management System

HARDWAR

E

Mobile	4G/LTE (Cat 4), 3G, 2G
CPU	Atheros, MIPS 74Kc, 550 MHz
Memory	16 MBytes Flash, 64 MBytes RAM
Powering option	4pin power socket, 9-30 VDC
SIM	1 x External SIM holder (2FF)
Antenna connectors	2 x FAKRA D for mobile, 1 x FAKRA C for GPS
WiFi	IEEE 802.11b/g/n, Access point (AP), Station (STA)
GNSS	GPS, GLONASS, BeiDou, Galileo, QZSS
Ignition detection	On 4pin socket: 1 x pin for ignition detection
Status LEDs	3 x Connection type, 5 x Signal strength, 1 x WiFi, 1 x Power
Operating temperature	-40 °C to 75 °C
Housing	Plastic housing
Dimensions (W x H x D)	131 x 18 x 79 mm
Weight	110 g

SOFTWARE

Operating system	RutOS (OpenWrt based Linux OS)
Network protocols	TCP, UDP, IPv4, ICMP, NTP, DNS, HTTP, HTTPS, FTP, SMTP, SSLv3, TLS 1.3, ARP, PPP, PPPoE, DHCP, Telnet
Network	Failover (Network backup), VLAN, QoS, Load Balancing
Monitoring and management	WEB UI, SSH, SMS, TR-069, RMS
Connection monitoring	Ping Reboot, Periodic Reboot, LCP and ICMP for link inspection
Cloud solutions	RMS, FOTA
Hotspot	External/Internal Radius, SMS OTP, MAC authentication, Walled Garden
Supported Hotspot platforms	IronWiFi, HotspotSystem, Cloud4Wi, SAI + WiFi, MugiCloud, Purple.ai
NTP	NTP Server, NTP Client, Sync with: External NTP server, GNSS
GNSS	NMEA forwarding, AVL, Geofencing



GKRUT950

INDUSTRIAL CELLULAR ROUTER

This router is equipped with Dual-SIM, 4 x Ethernet interfaces and WiFi. Device is designed as Main/Backup Internet source and can guarantee reliable Internet connection with high data throughput and data redundancy. GKRUT950 comes with RutOS software and security features with RMS support.

CONNECTIVITY

4G/LTE (Cat 4), 3G, 2G

WAN FAILOVER

Automatic switch to available backup connection

WIFI

Wireless Access Point with Hotspot functionality

DUAL SIM

With auto failover, backup WAN and other switching scenarios

ETHERNET

4 x Ethernet interfaces with VLAN functionality

RMS

Compatible with Geokall Remote Management System

HARDWARE

E

Mobile	4G/LTE (Cat 4), 3G, 2G
CPU	Atheros, MIPS 74Kc, 550 MHz
Memory	16 MBytes Flash, 128 MBytes RAM
Powering option	4pin power socket, 9-30 VDC
SIM	2 x External SIM holders (2FF)
Antenna connectors	2 x SMA for mobile, 2 x RP-SMA for WiFi
Ethernet	4 x 10/100 Ethernet ports: 1 x WAN (configurable as LAN), 3 x LAN
WiFi	IEEE 802.11b/g/n, Access point (AP), Station (STA)
Inputs/Outputs	On 4pin socket: 1 x Digital input, 1 x Digital open collector output
Status LEDs	1 x Bi-Color connection type, 5 x Signal strength, 4 x Ethernet, 1 x Power
Operating temperature	-40 °C to 75 °C
Housing	Aluminium housing with DIN rail mounting option, plastic panels with flat mounting option
Dimensions (W x H x D)	109 x 50 x 103 mm
Weight	263 g

SOFTWARE

Operating system	RutOS (OpenWrt based Linux OS)
Mobile features	Auto APN, Band lock, SIM switch, Operator black/white list, Data/SMS limits
Network	Failover (Network backup), VLAN, QoS, Load Balancing
Routing	Static routes, Dynamic routes (BGP, OSPFv2, RIPv1/v2, NHRP), Routing rules
VPN and tunneling	OpenVPN, IPsec, GRE, PPTP, L2TP, Stunnel, DMVPN, SSTP
Monitoring and management	WEB UI, CLI, SSH, SMS, TR-069, SNMP, JSON-RPC, MQTT, RMS
Connection monitoring	Ping Reboot, Wget reboot, Periodic Reboot, LCP and ICMP for link inspection
Cloud solutions	RMS, Telenor, Azure IoT Hub, Cloud of Things, Cumulocity, ThingWorx
Hotspot	External/Internal Radius, SMS OTP, MAC authentication, Walled Garden
Supported Hotspot platforms	IronWiFi, HotspotSystem, Cloud4Wi, SAI + WiFi, MugiCloud, Purple.ai
SMS features	SMS status, SMS configuration, Send/Read SMS via HTTP POST/GET, EMAIL to SMS, SMS to Email, SMS to HTTP, SMS to SMS, scheduled SMS, SMS autoreply, SMPP
Services	DDNS, VRRP, Wake On Lan (WOL), WEB filter, UPNP, Traffic Logging



GKRUT955

INDUSTRIAL CELLULAR ROUTER

Equipped with Dual-SIM, 4 x Ethernet, WiFi and RS232, RS485, USB interfaces and Inputs/Outputs. GKRUT955 comes with RutOS advanced software features such as Modbus, SNMP, TR-069, NTRIP, MQTT protocol support and custom GNSS tracking protocol that is compatible with Global AVL tracking platforms.

CONNECTIVITY

4G/LTE (Cat 4), 3G, 2G

DUAL SIM

For additional connection reliability

GNSS

Global Navigation Satellite System for location services and time synchronization

I/O

Multiple digital and analog inputs and outputs
46 for equipment control and event notification

SERIAL

RS232/RS485 serial communication interfaces

RMS

Compatible with Geokall Remote Management System

HARDWARE

Mobile	4G/LTE (Cat 4), 3G, 2G
CPU	Atheros, MIPS 74Kc, 550 MHz
Memory	16 MBytes Flash, 128 MBytes RAM
Powering option	4pin power socket, 9-30 VDC
SIM	2 x External SIM holders (2FF)
Antenna connectors	2 x SMA for mobile, 2 x RP-SMA for WiFi, 1 x SMA for GPS
Ethernet	4 x 10/100 Ethernet ports: 1 x WAN (configurable as LAN), 3 x LAN
WiFi	IEEE 802.11b/g/n, Access point (AP), Station (STA)
GNSS	GPS, GLONASS, BeiDou, Galileo, QZSS
Inputs/Outputs	On 4pin socket: 1 x Digital input, 1 x Digital open collector output On 10pin socket: 1 x Isolated digital input, 1 x Digital dry input, 1 x Analog input, 1 x Isolated open collector output (requires external voltage), 1 x Relay output (non-latching)
Serial	1 x RS232, 1 x RS485
Other	1 x USB host, 1 x MicroSD
Status LEDs	1 x Bi-Color connection type, 5 x Signal strength, 4 x Ethernet, 1 x Power
Operating temperature	-40 °C to 75 °C
Housing	Aluminium housing with DIN rail mounting option, plastic panels with flat mounting option
Dimensions (W x H x D)	109 x 50 x 103 mm
Weight	295 g

SOFTWARE

Operating system	RutOS (OpenWrt based Linux OS)
Mobile features	Band lock, SIM switch, Operator black/white list, Data/SMS limits
Network	Failover (Network backup), VLAN, QoS, Load Balancing
Monitoring and management	WEB UI, CLI, SSH, SMS, TR-069, SNMP, JSON-RPC, MQTT, RMS
Cloud solutions	RMS, Telenor, Azure IoT Hub, Cloud of Things, Cumulocity, ThingWorx NTP NTP Server, NTP Client, Sync with: External NTP server, GNSS, Mobile operator
GNSS	NMEA forwarding, AVL, Geofencing
Modbus	TCP slave, TCP master, RTU master, RTU gateway, Modbus over MQTT
Serial	Console, Over IP, Modem, NTRIP, Modbus



GKRUTX08

INDUSTRIAL ETHERNET ROUTER

This robust industrial router is equipped with 4 x Gigabit Ethernet ports, Quad-core CPU and 256 MB of RAM. These powerful specifications combined with core RutOS software features, such as multiple VPN services, advanced Firewall and RMS support, makes this device a superb Industrial performer.

GIGABIT ETH

4 x Gigabit Ethernet ports with up to 128 port/tag-based VLANs supported

I/O & USB

Digital Input / Output for remote monitoring and control and USB 2.0 interface

9-50 V

This router supports a wide range of power supply voltage for versatile integration

PROTOCOLS

Multiple protocols supported including MQTT, Modbus TCP, BGP, GRE

SECURITY

Firewall and numerous VPN services including OpenVPN, IPsec, PPTP, L2TP & DMVPN

RMS

Compatible with Geokall Remote Management System

HARDWARE

CPU	Qualcomm, 4 x ARM Cortex A7, 717 MHz
Memory	256 MBytes Flash, 256 MBytes RAM
Powering option	4pin power socket, 9-50 VDC
Ethernet	4 x 10/100/1000 Ethernet ports: 1 x WAN (configurable as LAN), 3 x LAN
Inputs/Outputs	On 4pin socket: 1 x Digital input, 1 x Digital open collector output
Other	1 x USB Host
Status LEDs	8 x Ethernet, 1 x Power
Operating temperature	-40 °C to 75 °C
Housing	Aluminium housing with DIN rail mounting option and grounding capability
Dimensions (W x H x D)	115 x 32 x 95 mm
Weight	345 g

SOFTWARE

Operating system	RutOS (OpenWrt based Linux OS)
Network protocols	TCP, UDP, IPv4, IPv6, ICMP, NTP, DNS, HTTP, HTTPS, FTP, SMTP, SSLv3, TLS 1.3, ARP, PPP, PPPoE, DHCP, Telnet
Routing	Static routes, Dynamic routes (BGP, OSPFv2, RIPv1/v2, EIGRP, NHRP), Routing rules
Firewall	Port forward, Traffic rules, Custom rules, Pre-configured firewall rules, DMZ, NAT, NAT-T, NAT helpers, Unlimited firewall configuration via CLI
Security	DDOS prevention (SYN flood protection, SSH attack prevention, HTTP/HTTPS attack prevention), Port scan prevention (SYN-FIN, SYN-RST, X-mas, NULL flags, FIN scan attacks)
VPN and tunneling	OpenVPN, IPsec, GRE, PPTP, L2TP, Stunnel, DMVPN, SSTP, WireGuard, ZeroTier
Monitoring and management	WEB UI, CLI, SSH, SMS, TR-069, SNMP, JSON-RPC, MQTT, RMS
Cloud solutions	RMS, Azure IoT Hub, Cloud of Things, Cumulocity, ThingWorx
Services	DDNS, VRRP, Wake On Lan (WOL), WEB filter, UPNP, Network shares (Samba), Traffic Logging
Administration	Multi user, Configuration profiles, Diagnostics, logs, Configuration backup



GKCRUTX09

INDUSTRIAL CELLULAR ROUTER

This powerful LTE Cat 6 cellular industrial router is designed for professional and IoT applications where steady and fast connection and high data throughput is required.

4G LTE CAT 6

Cellular speeds up to 300Mbps with Carrier Aggregation

DUAL SIM

With auto failover, backup WAN and other switching scenarios

GIGABIT ETH

4 x Gigabit Ethernet ports with up to 128 port/tag-based VLANs supported

GNSS

Global Navigation Satellite System for location services and time synchronization

SECURITY

Firewall and numerous VPN services including OpenVPN, IPsec, PPTP, L2TP & DMVPN

RMS

Compatible with Geokall Remote Management System

HARDWARE

Mobile	4G/LTE (Cat 6), 3G
CPU	Qualcomm, 4 x ARM Cortex A7, 717 MHz
Memory	256 MBytes Flash, 256 MBytes RAM
Powering option	4pin power socket, 9-50 VDC
SIM	2 x External SIM holders (2FF)
Antenna connectors	2 x SMA for mobile, 1 x SMA for GPS
Ethernet	4 x 10/100/1000 Ethernet ports: 1 x WAN (configurable as LAN), 3 x LAN
GNSS	GPS, GLONASS, BeiDou, Galileo, QZSS
Inputs/Outputs	On 4pin socket: 1 x Digital input, 1 x Digital open collector output
Other	1 x USB host
Status LEDs	3 x WAN type, 2 x Connection type, 5 x Signal strength, 8 x Ethernet, 1 x Power
Operating temperature	-40 °C to 75 °C
Housing	Aluminium housing with DIN rail mounting option and grounding capability
Dimensions (W x H x D)	115 x 44 x 95 mm
Weight	455 g

SOFTWARE

Operating system	RutOS (OpenWrt based Linux OS)
Mobile features	Multiple PDN, Auto APN, Band lock, SIM switch, Operator black/white list, Data/SMS limits
Network protocols	TCP, UDP, IPv4, IPv6, ICMP, NTP, DNS, HTTP, HTTPS, FTP, SMTP, SSLv3, TLS 1.3, ARP, PPP, PPPoE, DHCP, Telnet
Network	Failover (Network backup), VLAN, QoS, Load Balancing
VPN and tunneling	OpenVPN, IPsec, GRE, PPTP, L2TP, Stunnel, DMVPN, SSTP, WireGuard, ZeroTier
Monitoring and management	WEB UI, CLI, SSH, SMS, TR-069, SNMP, JSON-RPC, MQTT, RMS
Cloud solutions	RMS, Azure IoT Hub, Cloud of Things, Cumulocity, ThingWorx
NTP	NTP Server, NTP Client, Sync with: External NTP server, GNSS, Mobile operator
GNSS	NMEA forwarding, AVL, Geofencing
Services	DDNS, VRRP, Wake On Lan (WOL), WEB filter, UPNP, Network shares (Samba), Traffic Logging
Administration	Multi user, Configuration profiles, Diagnostics, logs, Configuration backup



GKRUTX10

PROFESSIONAL ETHERNET ROUTER

This professional router combines the best of wired and wireless routing functionalities with Gigabit Ethernet, Bluetooth LE, and AC Wi-Fi. Advanced remote management capabilities along with numerous security & networking protocols supported make GKRUTX10 an ideal choice for professional applications.

GIGABIT ETH

4 x Gigabit Ethernet ports with up to 128 port/tag-based VLANs supported

I/O & USB

Digital Input / Output for remote monitoring and control and USB 2.0 interface

WIFI & BT

Wave-2 802.11ac Dual Band WIFI and Bluetooth LE

PROTOCOLS

Multiple protocols supported including MQTT, Modbus TCP, BGP, GRE

SECURITY

Firewall and numerous VPN services including OpenVPN, IPsec, PPTP, L2TP & DMVPN

RMS

Compatible with Geokall Remote Management System

HARDWARE

CPU	Qualcomm, 4 x ARM Cortex A7, 717 MHz
Memory	256 MBytes Flash, 256 MBytes RAM
Powering option	4pin power socket, 9-50 VDC
Antenna connectors	2 x RP-SMA for WiFi, 1 x RP-SMA for Bluetooth
Ethernet	4 x 10/100/1000 Ethernet ports: 1 x WAN (configurable as LAN), 3 x LAN
WiFi	IEEE 802.11a/b/g/n/ac 2.4GHz/5GHz, Access point (AP), Station (STA)
Bluetooth	4.0 (Low energy)
Inputs/Outputs	On 4pin socket: 1 x Digital input, 1 x Digital open collector output
Other	1 x USB host
Status LEDs	2 x WiFi, 8 x Ethernet, 1 x Power
Operating temperature	-40 °C to 75 °C
Housing	Aluminium housing with DIN rail mounting option and grounding capability
Dimensions	115 x 32 x 95 mm
Weight	355 g

SOFTWARE

Operating system	RutOS (OpenWrt based Linux OS)
Network protocols	TCP, UDP, IPv4, IPv6, ICMP, NTP, DNS, HTTP, HTTPS, FTP, SMTP, SSLv3, TLS 1.3, ARP, PPP, PPPoE, DHCP, Telnet
Routing	Static routes, Dynamic routes (BGP, OSPFv2, RIPv1/v2, EIGRP, NHRP), Routing rules
VPN and tunneling	OpenVPN, IPsec, GRE, PPTP, L2TP, Stunnel, DMVPN, SSTP, WireGuard, ZeroTier
Monitoring and management	WEB UI, CLI, SSH, SMS, TR-069, SNMP, JSON-RPC, MQTT, RMS
Connection monitoring	Ping Reboot, Wget reboot, Periodic Reboot, LCP and ICMP for link inspection
Cloud solutions	RMS, Azure IoT Hub, Cloud of Things, Cumulocity, ThingWorx
Hotspot	External/Internal Radius, MAC authentication, Walled Garden
Supported Hotspot platforms	IronWiFi, HotspotSystem, Cloud4Wi, SAI + WiFi, MugiCloud, Purple.ai
Services	DDNS, VRRP, Wake On Lan (WOL), WEB filter, UPNP, Network shares (Samba), Traffic Logging



GKRUTX11

INDUSTRIAL CELLULAR ROUTER

This powerful LTE Cat 6 cellular industrial router is designed for professional and IoT applications where steady and fast connection and high data throughput is required. It is equipped with 4 x Gigabit Ethernet, Bluetooth LE, and AC Wi-Fi with remote management capabilities.

4G LTE CAT 6

Cellular speeds up to 300Mbps with Carrier Aggregation

DUAL SIM

With auto failover, backup WAN and other switching scenarios

WIFI & BT

Wave-2 802.11ac Dual Band WIFI and Bluetooth LE

GNSS

Global Navigation Satellite System for location services and time synchronization

PROTOCOLS

Multiple protocols supported including MQTT, Modbus TCP, BGP, GRE

RMS

Compatible with Geokall Remote Management System

HARDWARE

Mobile	4G/LTE (Cat 6), 3G
CPU	Qualcomm, 4 x ARM Cortex A7, 717 MHz
Memory	256 MBytes Flash, 256 MBytes RAM
Powering option	4pin power socket, 9-50 VDC
SIM	2 x External SIM holders (2FF)
Antenna connectors	2 x SMA for mobile, 2 x RP-SMA for WiFi, 1 x RP-SMA for Bluetooth, 1 x SMA for GPS
Ethernet	4 x 10/100/1000 Ethernet ports: 1 x WAN (configurable as LAN), 3 x LAN
WiFi	IEEE 802.11a/b/g/n/ac 2.4GHz/5GHz, Access point (AP), Station (STA)
GNSS	GPS, GLONASS, BeiDou, Galileo, QZSS
Bluetooth	4.0 (Low energy)
Inputs/Outputs	On 4pin socket: 1 x Digital input, 1 x Digital open collector output
Other	1 x USB host
Status LEDs	4 x WAN type, 2 x Connection type, 5 x Signal strength, 2 x WiFi, 8 x Ethernet, 1 x Power
Operating temperature	-40 °C to 75 °C
Housing	Aluminium housing with DIN rail mounting option and grounding capability
Dimensions	115 x 44 x 95 mm
Weight	456 g

SOFTWARE

Operating system	RutOS (OpenWrt based Linux OS)
Mobile features	Multiple PDN, Auto APN, Band lock, SIM switch, Operator black/white list, Data/SMS limits
Network	Failover (Network backup), VLAN, QoS, Load Balancing
Routing	Static routes, Dynamic routes (BGP, OSPFv2, RIPv1/v2, EIGRP, NHRP), Routing rules
VPN and tunneling	OpenVPN, IPsec, GRE, PPTP, L2TP, Stunnel, DMVPN, SSTP, WireGuard, ZeroTier
Cloud solutions	RMS, Azure IoT Hub, Cloud of Things, Cumulocity, ThingWorx
Hotspot	External/Internal Radius, SMS OTP, MAC authentication, Walled Garden
NTP	NTP Server, NTP Client, Sync with: External NTP server, GNSS, Mobile operator
GNSS	NMEA forwarding, AVL, Geofencing



GKRUTX12

DUAL LTE CAT 6 INDUSTRIAL CELLULAR ROUTER

Powerful Dual LTE Cat 6 router is designed for mission critical applications. Equipped with two LTE modems for dual simultaneous connections allowing instant seamless LTE service switching and load balancing features make this device irreplaceable in applications where losing connection is not an option.

DUAL LTE

Cellular speeds up to 600Mbps with dual simultaneous LTE CAT 6 connections

DUAL SIM

Instant failover switching

WIFI & BT

Wave-2 802.11ac Dual Band WIFI and Bluetooth LE

GNSS

Global Navigation Satellite System for location services and time synchronization

LOAD BALANCING

Allows to use multiple WAN sources to increase throughput

RMS

Compatible with Geokall Remote Management System

HARDWARE

Mobile	2 X 4G/LTE (Cat 6), 3G
CPU	Qualcomm, 4 x ARM Cortex A7, 717 MHz
Memory	256 MBytes Flash, 256 MBytes RAM
Powering option	4pin power socket, 9-50 VDC
SIM	2 x External SIM holders (2FF)
Antenna connectors	4 x SMA for mobile, 2 x RP-SMA for WiFi, 1 x RP-SMA for Bluetooth, 1 x SMA for GPS
Ethernet	5 x 10/100/1000 Ethernet ports: 1 x WAN (configurable as LAN), 4 x LAN
WiFi	IEEE 802.11a/b/g/n/ac 2.4GHz/5GHz, Access point (AP), Station (STA)
GNSS	GPS, GLONASS, BeiDou, Galileo, QZSS
Connectors	1 x 4 pin DC, 5 x Ethernet, 4 x SMA for LTE, 2 x WiFi RP-SMA, 1 x SMA for GNSS, 1 x RP-SMA for Bluetooth
Bluetooth	4.0 (Low energy)
Inputs/Outputs	On 4pin socket: 1 x Digital input, 1 x Digital open collector output
Other	1 x USB host
Status LEDs	4 x WAN type, 6 x Connection type, 6 x Signal strength, 2 x WiFi, 10 x Ethernet, 1 x Power
Operating temperature	-40 °C to 75 °C
Housing	Aluminium housing with DIN rail mounting option and grounding capability
Dimensions (W x H x D)	132 x 44 x 95 mm
Weight	540 g

SOFTWARE

Operating system	RutOS (OpenWrt based Linux OS)
Mobile features	Multiple PDN, Auto APN, Band lock, SIM switch, Operator black/white list, Data/SMS limits
Network	Failover (Network backup), VLAN, QoS, Load Balancing
Routing	Static routes, Dynamic routes (BGP, OSPFv2, RIPv1/v2, EIGRP, NHRP), Routing rules
Monitoring and management	WEB UI, CLI, SSH, SMS, TR-069, SNMP, JSON-RPC, MQTT, RMS
Cloud solutions	RMS, Azure IoT Hub, Cloud of Things, Cumulocity, ThingWorx
Hotspot	External/Internal Radius, SMS OTP, MAC authentication, Walled Garden
Supported Hotspot platforms	IronWiFi, HotspotSystem, Cloud4Wi, SAI + WiFi, MugiCloud, Purple.ai



GKRUTXR1

ENTERPRISE SFP/LTE RACK MOUNT READY ROUTER

Rack-mounted LTE Cat6 router with redundant power supplies and WAN interfaces (WAN failover), Dual SIM, SFP, USB and dedicated console ports. This feature-rich device with well-known and powerful RutOS is perfect where fast and ultra-reliable connection is needed.

4G LTE CAT 6

Cellular speeds up to 300Mbps with Carrier Aggregation

DUAL SIM

With auto failover, backup WAN and other switching scenarios

WIFI

Wave-2 802.11ac Dual Band WIFI

SFP

SFP port for long-range Fiber-optic communication

GIGABIT ETH

5 x Gigabit Ethernet ports

RMS

Compatible with Geokall Remote Management System

HARDWARE

Mobile	4G/LTE (Cat 6), 3G
CPU	Qualcomm, 4 x ARM Cortex A7, 717 MHz
Memory	256 MBytes Flash, 256 MBytes RAM
Powering option	4pin power socket, 9-50 VDC (main) 4pin power socket, 9-50 VDC (redundant)
SIM	2 x External SIM holders (2FF)
Antenna connectors	2 x SMA for mobile, 2 x RP-SMA for WiFi
Ethernet	5 x 10/100/1000 Ethernet ports: 1 x WAN (configurable as LAN), 4 x LAN
WiFi	IEEE802.11a/b/g/n/ac 2.4GHz/5GHz, Accesspoint (AP), Station (STA)
Other	1 x USB host, 1 x SFP, 1 x RS232 console
Status LEDs	2 x WAN type, 2 x Connection type, 3 x Signal strength, 2 x SIM, 2 x Console, 10 x Ethernet, 2 x Power
Operating temperature	-40 °C to 75 °C
Housing	Full aluminium rack unit housing with grounding capability
Dimensions (W x H x D)	272 x 44 x 123 mm
Weight	1050 g

SOFTWARE

Operating system	RutOS (OpenWrt based Linux OS)
Mobile features	Multiple PDN, Auto APN, Band lock, SIM switch, Operator black/white list, Data/SMS limits
Network protocols	TCP, UDP, IPv4, IPv6, ICMP, NTP, DNS, HTTP, HTTPS, FTP, SMTP, SSLv3, TLS 1.3, ARP, PPP, PPPoE, DHCP, Telnet
Network	Failover (Network backup), VLAN, QoS, Load Balancing
Routing	Static routes, Dynamic routes (BGP, OSPFv2, RIPv1/v2, EIGRP, NHRP), Routing rules
VPN and tunneling	OpenVPN, IPsec, GRE, PPTP, L2TP, Stunnel, DMVPN, SSTP, WireGuard, ZeroTier
Monitoring and management	WEB UI, CLI, SSH, SMS, TR-069, SNMP, JSON-RPC, MQTT, RMS
Cloud solutions	RMS, Azure IoT Hub, Cloud of Things, Cumulocity, ThingWorx
Services	DDNS, VRRP, Wake On Lan (WOL), WEB filter, UPNP, Network shares (Samba), Traffic Logging

INTELLIGENT TRAFFIC SYSTEM CONNECTIVITY

INDUSTRY & AUTOMATION

According to the projections by the United Nations, the world population will reach 9.8 billion by 2050. Ongoing mass urbanization is forecasted to result in 50% of the world's population living in cities. Apart from numerous city planning, social and economic challenges, these two factors will contribute towards increased congestion-related problems. Recent surveys suggest that the average American spends around 19 days per year stuck in traffic. However, without advanced, centrally controlled intelligent traffic systems, this number would be far higher.

SOLUTION

Globally, intelligent traffic systems are in different development stages. Integrators and governments worldwide have already recognized that a single Internet connectivity source is insufficient due to high maintenance costs and imperfect availability. GKRUTX09 cellular router with LTE Cat 6 and Dual SIM functionality is perfect for providing backup cellular connectivity for intelligent traffic infrastructure because it is secure, reliable, and easy to use. Besides, it has carrier aggregation functionality, ensuring efficient use of mobile GSM resources. Operators are motivated to offer more attractive

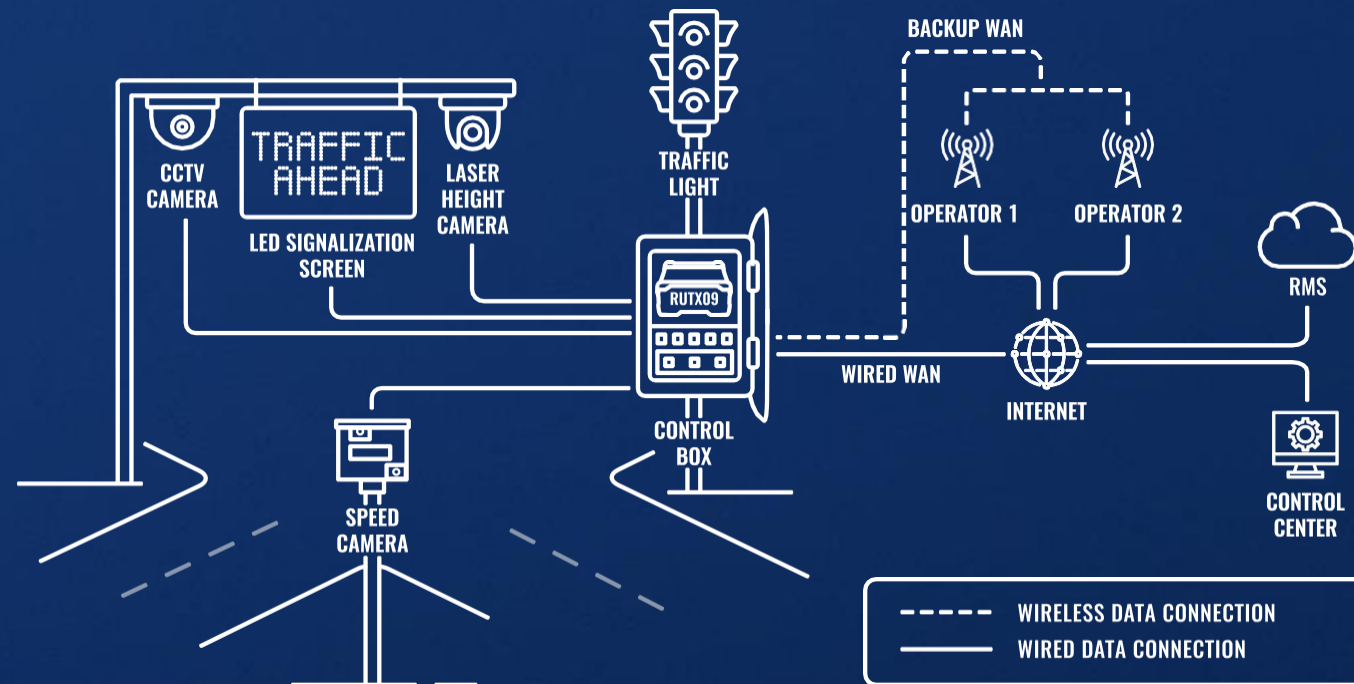
data service plans for large scale projects compatible with carrier aggregation technology. The dual SIM functionality ensures that even if one operator service gets interrupted, the GKRUTX09 will switch to a redundant operator to provide uninterrupted connectivity.

BENEFITS

/Scalability - backup connectivity projects for Intelligent traffic systems require a large number of routers. GKRUTX09 is compatible with Geokall RMS, allowing integrators to configure an infinite number of devices remotely and instantly.

/Cost-efficiency - it is less expensive to install a cellular router for the Internet connectivity redundancy rather than rely on a single source of connection and carry out reactive maintenance upon losing the service.

/Ease of use - with GKRUTX09 and RMS, system operators can be in control of their network infrastructure from a single control location even without a public IP! It is possible to monitor and control equipment that is thousands of miles away without any local presence.



FAST AND UNINTERRUPTED RETAIL CONNECTIVITY

RETAIL

Nowadays, most retail businesses are offering multiple means of customer services oriented to engagement and satisfaction. Connected services include offering public WIFI with captive portals for client engagement, digital signage screens, people counting solutions, and automated inventory management for stock control to have more operational control and transparency. Naturally, digital payment options and card payments remain a must-have option in a physical retail environment.

SOLUTION

4G LTE is becoming a more and more favorable option for fast and reliable Internet connectivity. With multiple cellular modules, higher LTE categories, mobile Internet services can match and surpass the speeds of wired connections in congested areas. However, cellular solutions can be deployed instantly without the need for cabling and arranging long-term contracts. Retail connectivity security, downtime, and availability challenges are all resolved by choosing a professional cellular router with two 4G LTE CAT6 modules working simultaneously. In the proposed solution with our GKRUTX12, the two SIM cards working together can provide speeds up to 600 Mbps and ensure that all retail solution components are connected. Two modules can increase solution security by splitting traffic between two LTE modules, e.g., corporate traffic and customer services.

As shown in the topology, the POS system, computer, and thermal

camera connect to the router via Ethernet. Barcode scanners and tablets use the WiFi for a secure, private network. GKRUTX12 supports IPsec, OpenVPN, and other VPNs, allowing the companies to configure their networks to meet their needs and requirements. Finally, the GKRUTX12 is compatible with the RMS, enabling system operators to monitor and manage the whole network remotely, including remote configuration, firmware updates, notifications, reports, and much more.

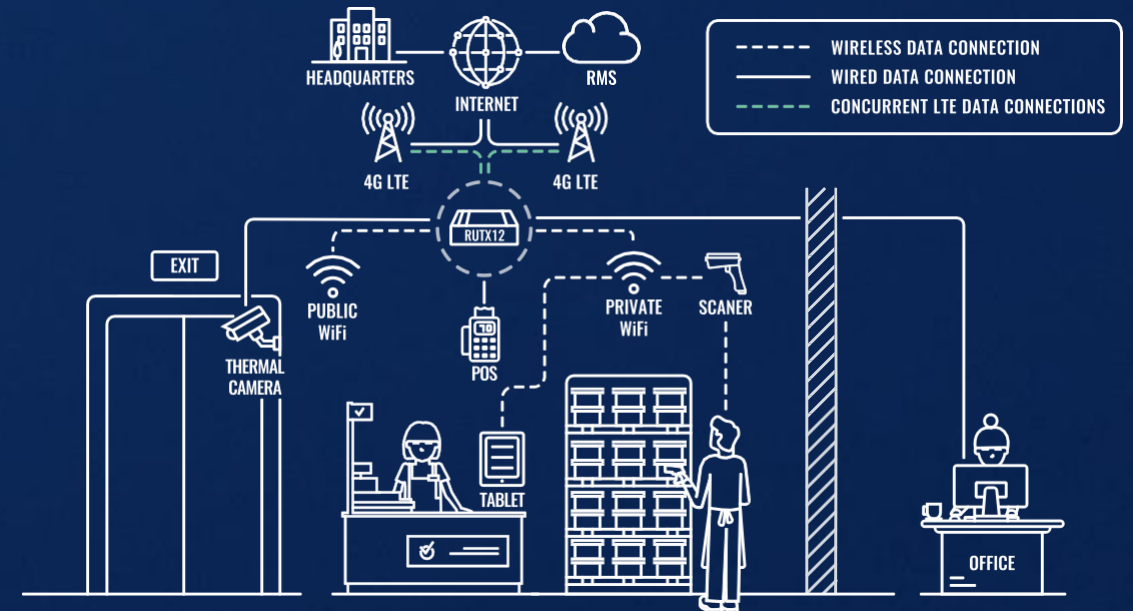
BENEFITS

/Performance - GKRUTX12 with two LTE CAT 6 cellular simultaneously working modules can provide speeds up to 600 Mbps.

/Functionality - GKRUTX12 can split traffic between two mobile connections with load balancing.

/Remote monitoring - with RMS, you can conveniently monitor all network and make configurations remotely.

/Security - with advanced RutOS features, GKRUTX12 offers multiple VPN options, embedded firewall, and other security features to comply with high-security standards.



SWITCHES

Geokall provides a range of industrial Ethernet Switches. They feature industrial-grade reliability, network redundancy, security and easy management. Switches have multiple mounting options for faster and easier installations.



GKT SW100

INDUSTRIAL UNMANAGED POE+ SWITCH

GKT SW100 - 5-port, unmanaged full Gigabit Ethernet switch supporting Power-over-Ethernet (802.3af and 802.3at standards). This device is classified as power source equipment (PSE), and when used in this way, GKT SW100 switch enables centralization of the power supply, providing up to 30 watts of power per port and reducing the effort for installing power. It has 10/100/1000 Mbps Ethernet ports to provide an economical high-bandwidth solution for your industrial Ethernet network.

POE

4 x PoE ports with 802.3af and 802.3at support

DURABLE

Rugged aluminium housing

MOUNTING

DIN rail and surface mounting options

POWER BUDGET

Total power budget at PSE up to 120 W

ETHERNET

5 x Gigabit Ethernet with speeds up to 1000 Mbps

PLUG-N-PLAY

No additional configuration needed

HARDWARE

Powering option	4pin power socket, 7-57 VDC
Power consumption	Idle: < 2 W, Max: < 9 W (no PoE device connected)
PoE standart	802.3af/at (max 30 W per port, total power budget 120W*)
Ethernet	5 x 10/100/1000 Ethernet ports: 4 x PoE, 1 x Uplink
Status LEDs	10 x Ethernet, 1 x Power
Ingress protection rating	IP30
Operating temperature	-40 °C to 75 °C
Housing	Aluminium housing with wall or DIN rail mounting option and grounding capability
Dimensions	115 x 32 x 95 mm
Weight	340 g

PERFORMANCE SPECIFICATIONS

Bandwidth	10 Gbps
Packet buffer	128 KB
Jumbo frame support	9216 bytes
MAC address table size	2K entries
Auto MDI/MDI-X Cable Detection	Yes

*Provided power supply only allows 60 W PoE power budget at PSE, to reach maximum 120 W at PSE > 130 W power PSU must be used



GKTSW110

L2 UNMANAGED SWITCH

GKTSW110 is a layer 2 unmanaged switch that is a simplified version of our earlier product - GKTSW100. It is a tiny but rugged device for industrial high bandwidth applications requiring a reliable data connection. It has five Gigabit Ethernet ports and supports wide power supply voltages (9-30 V).

PLUG-N-PLAY

No additional configuration needed

DURABILITY

Rugged aluminium housing

MOUNTING

DIN rail and surface mounting options

RESILIENT

Operating temperature -40 °C to 75 °C

9-30 V

Wide range of supported power supply voltages

GIGABIT ETH

5 x Gigabit Ethernet with speeds up to 1000 Mbps

HARDWARE

Powering option	4pin power socket, 9-30 VDC
Power consumption	Idle: < 0.4 W, Max: < 1.8 W (no PoE device connected)
Ethernet	5 x 10/100/1000 Ethernet ports
Status LEDs	10 x Ethernet, 1 x Power
Ingress protection rating	IP30
Operating temperature	-40 °C to 75 °C
Housing	Aluminium housing with wall or DIN rail mounting option and grounding capability
Dimensions	100 x 30 x 85 mm
Weight	227 g

PERFORMANCE SPECIFICATIONS

Bandwidth	10 Gbps
Packet buffer	128 KB
Jumbo frame support	9216 bytes
MAC address table size	2K entries
Auto MDI/MDI-X Cable Detection	Yes

RELIABLE MULTIPLE CAMERA CONNECTIVITY

SMART CITY

The adoption of Closed-circuit television (CCTV) surveillance has been steadily growing in recent years. This technology provides reliable information for area monitoring, public order, and crime prevention. Surveillance systems play an integral role today because they are fast and easy to deploy and provide valuable data for private and public security and business operations. Finally, CCTV solutions are highly demanded across Smart City projects and enable smart solutions such as parking and retail business intelligence.

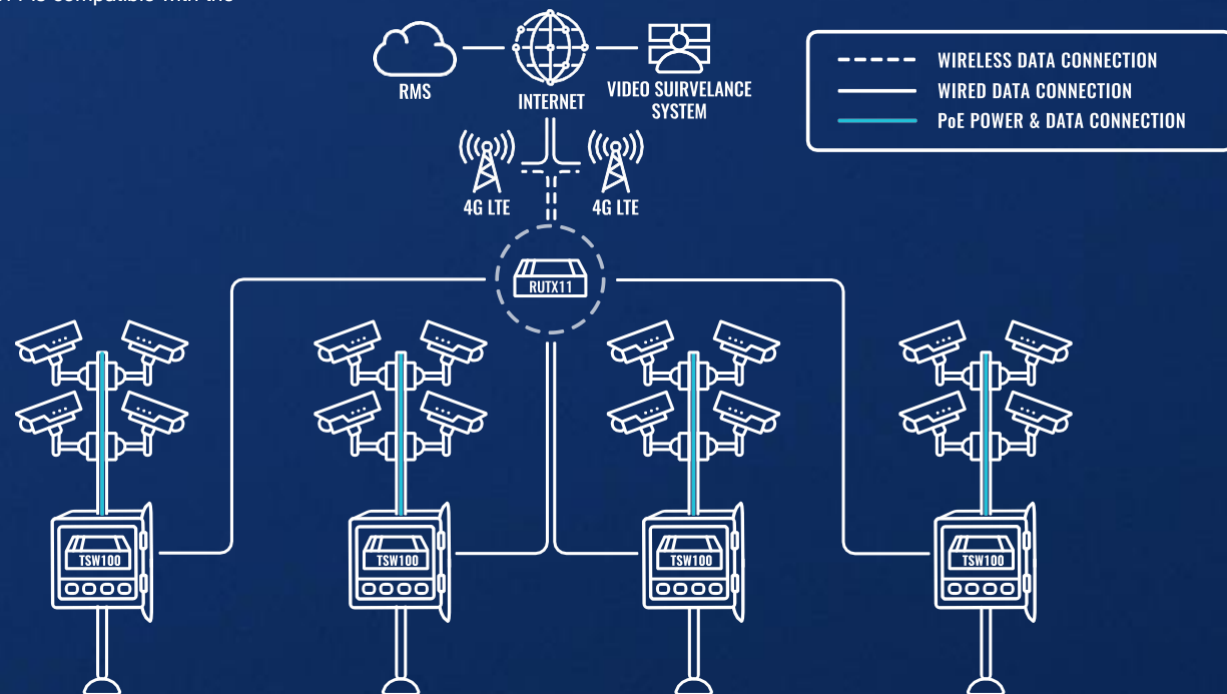
SOLUTION

GKRUTX11 cellular router is responsible for stable and robust Internet connectivity delivered through 4G LTE. All CCTV cameras connect via PoE (Power over Ethernet) compatible switch - GKTSW100. This device has five Gigabit Ethernet ports, four of which support IEEE 802.3af and IEEE802.3 at PoE standards. They allow to power up devices up to 30W power per port. GKRUTX11 and GKTSW100 can withstand harsh weather conditions with wide operating temperature ranges and have numerous mounting options for faster and easier installations. This solution can be deployed very fast and start operating within a few hours. And last but not least, the GKRUTX11 is compatible with the

Remote Management System (RMS). RMS enables remote set-up, configuration, and management of the whole solution.

BENEFITS

- /Reliable connectivity - dual SIM functionality makes mission-critical connectivity in remote areas.
- /Quick to deploy - no need to wait for wired Internet access deployment. The solution can be pre-configured before installation on-site.
- /Easy to install - PoE technology allows using Ethernet for both: powering up and data transmission.
- /Industrial Mounting Options - both devices have a DIN rail.
- /Easy to manage - with Remote Management System, system administrators can control the remote infrastructure with a convenient, user-friendly interface.
- /Secure - advanced features of the GKRUTX11, such as VPN, IPsec, Firewall, and Access Control, ensure the highest security standard.



POE TECHNOLOGY SIMPLIFYING OFFICE NETWORK INTEGRATIONS

ENTERPRISE

Smartphones have certainly changed the way we interact with technology and each other. However, the office environment with all technological innovations has mostly stayed unchanged. Of course, analog phones got replaced with their modern digital versions. Standard networks have gone wireless using numerous access points across the office. Security cameras with connected access control devices are helping building managers to ensure the security of the employees. Naturally, changing the way we interact with technology poses new challenges for office network integrators.

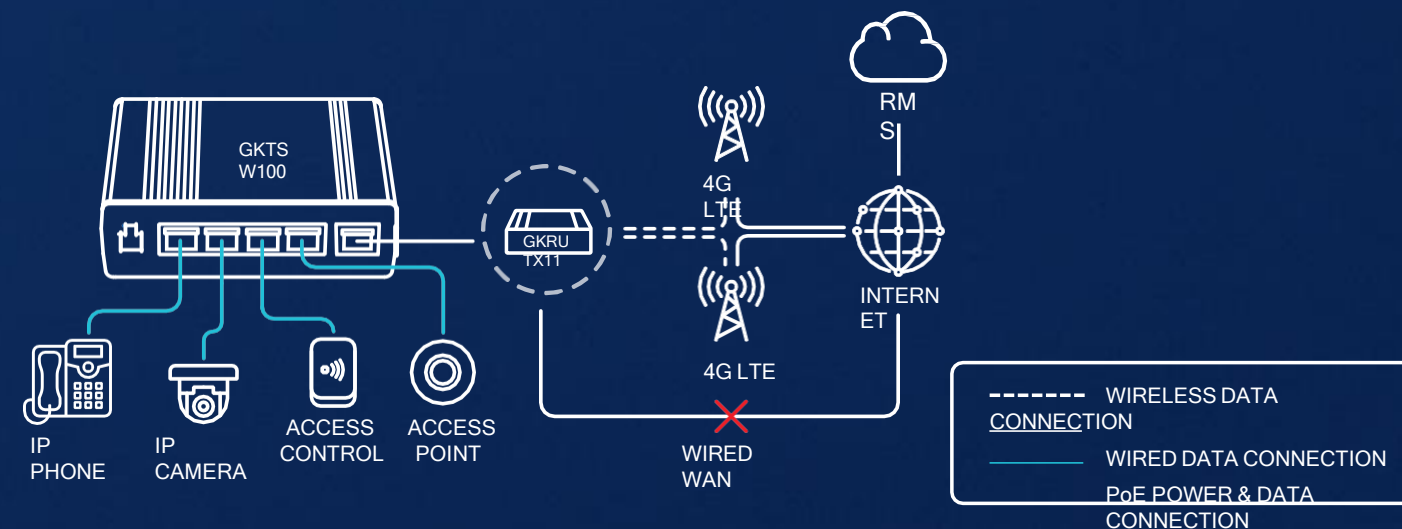
SOLUTION

IP devices, such as IP Cameras, IP Phones, wireless access points, and access control solutions, can be powered by PoE and connected via the PoE switch - GKTSW100. The PoE technology makes the installation process faster because it does not require the services of electrical installers. Networking engineers can connect and deliver both power and data with one Ethernet cable for PoE compliant devices. In this specific example, the GKTSW100 PoE switch connects to our cellular router GKRUTX11. This secure, high-performance cellular router is responsible for Internet connectivity from wired or mobile sources. 4G LTE CAT6 mobile technology can deliver up to 300 Mbps over cellular networks. Naturally, if the primary connection is lost or

unstable, GKRUTX11 can switch to another mobile provider due to its dual SIM and Auto Failover features. Besides, GKRUTX11 can deliver powerful wireless service with Dual-Band AC Wi-Fi functionality with secure and flexible usage settings and statistics for the users and system operators. Together, our cellular router GKRUTX11 and newly released PoE switch GKTSW100 is an excellent solution for office device connectivity deployment.

BENEFITS

- /Fast and easy to deploy - switch eliminates the usage of electrical power units.
- /Easy to use - GKTSW100 switch is a plug-and-play device, while GKRUTX11 has many functionalities that allow fast and easy setup.
- /Secure - data will be safe due to advanced security features of the GKRUTX11, such as VPN, IPsec, Firewall, and Access Control.
- /Reliable connectivity - Dual SIM functionality for primary and backup connection.
- /Convenience - dual-Band AC Wi-Fi functionality allows providing secure connectivity to employees and visitors of the office.



ACCESSORIES / POWERING OPTIONS



Power supply, 4.5 W
EU: PR3PTEU3 // UK: PR3PTUK3
AU: PR3PTAU3 // US: PR3PTUS3



Power supply, 9 W
EU: PR3PUEU3 // UK: PR3PUUK3
AU: PR3PUAU3 // US: PR3PUUS3



2-pin power supply, 9 W
EU: PR3PREU6 // UK: PR3PRUK6
AU: PR3PRAU6 // US: PR3PRUS6



Power supply, 18 W
EU: PR3PXEU3 // UK: PR3PXUK3
AU: PR3PXAU3 // US: PR3PXUS3



Power supply, 24 W
EU: PR3P2EU3 // UK: PR3P2UK3
AU: PR3P2AU3 // US: PR3P2US3



Power supply, 50 V, 1.3 A
EU: PR3PWEU3 // UK: PR3PWUK3
AU: PR3PWAU3 // US: PR3PWUS3



Universal power supply, 9 W
Order code: PR3PUPS3



4-pin to barrel socket adapter
Order code: PR2PD01B



Automotive power supply, 4 pin
Order code: PR2AM20M



Power cable with 4-way screw terminal
Order code: PR2FK20M



DIN Rail power supply
Order code: PR3PCNP0

ACCESSORIES / ANTENNA OPTIONS



COMBO MIMO mobile/GNSS/WiFi ROOF SMA antenna
Order code: PR1KCO28



COMBO SISO mobile/GNSS/WiFi ROOF SMA antenna
Order code: PR1KCS28



COMBO MIMO mobile ROOF SMA antenna
Order code: PR1KCL25



Mobile magnetic SMA antenna
Order code: PR1KS210



Mobile SMA antenna
Order code: PR1US440



WiFi magnetic SMA antenna
Order code: PR1KRF30



WiFi SMA antenna
Order code: PR1URF51



Bluetooth magnetic SMA antenna
Order code: PR1KRT25



GNSS Adhesive SMA antenna
Order code: PR1KSG30



GNSS Adhesive fakra antenna
Order code: PR1KFG30



Mobile adhesive fakra antenna
Order code: PR1LF435



Mobile adhesive sma antenna
Order code: PR1AS420



WiFi dual-band SMA antenna
Order code: PR14RD35



WiFi dual-band magnetic antenna
Order code: PR1KRD30



Angled Compact Mobile antenna
Order code: PR1US450



Straight Compact Mobile antenna
Order code: PR1CS450

ACCESSORIES / MOUNTING OPTIONS



Compact DIN Rail Kit
Order code: PRMEC11



DIN Rail Kit
Order code: PR5MEC00



Surface mounting kit
Order code: PR5MEC12



Surface clip holder kit
Order code: PR5MEC22

ACCESSORIES / BLUETOOTH SENSOR



BLE Beacon
Order code: 258-00093
Order code: 258-00094



BLE Temperature sensor
Order code: 258-00095
Order code: 258-00096



BLE Movement sensor
Order code: 258-00097
Order code: 258-00098



BLE Magnetic sensor
Order code: 258-00099
Order code: 258-00100



BLE Temperature sensor (EN 12830)
Order code: 258-00102



BLE Temperature and humidity sensor
Order code: 258-00101



Blue SLIM ID
Order code: PRIEDASN60

WE HELP
YOU
CONNECT

